



HAWAIIAN HOME LANDS

HAWAIIAN HOMES COMMISSION • DEPARTMENT OF HAWAIIAN HOME LANDS

# **Community Information Meeting**

## **Kapolei Community**

February 22, 2022



# Agenda

- Welcome
- Planning Office Update
- Land Development Division – Construction Project Updates
- Homestead Associations
- Q&A



# Meeting Kuleana

- 1) Be respectful of the person talking – please do not interrupt the person that is talking;
- 2) Wait for the facilitator to call on you or type your question into the chat box
- 3) When addressing other participants (verbally or in the chat box), be respectful, show aloha, treat others how you would like to be treated;
- 4) Agree to disagree — accept that others may have different perspectives and opinions.
- 5) Have an open mind — take home new ideas or new information.



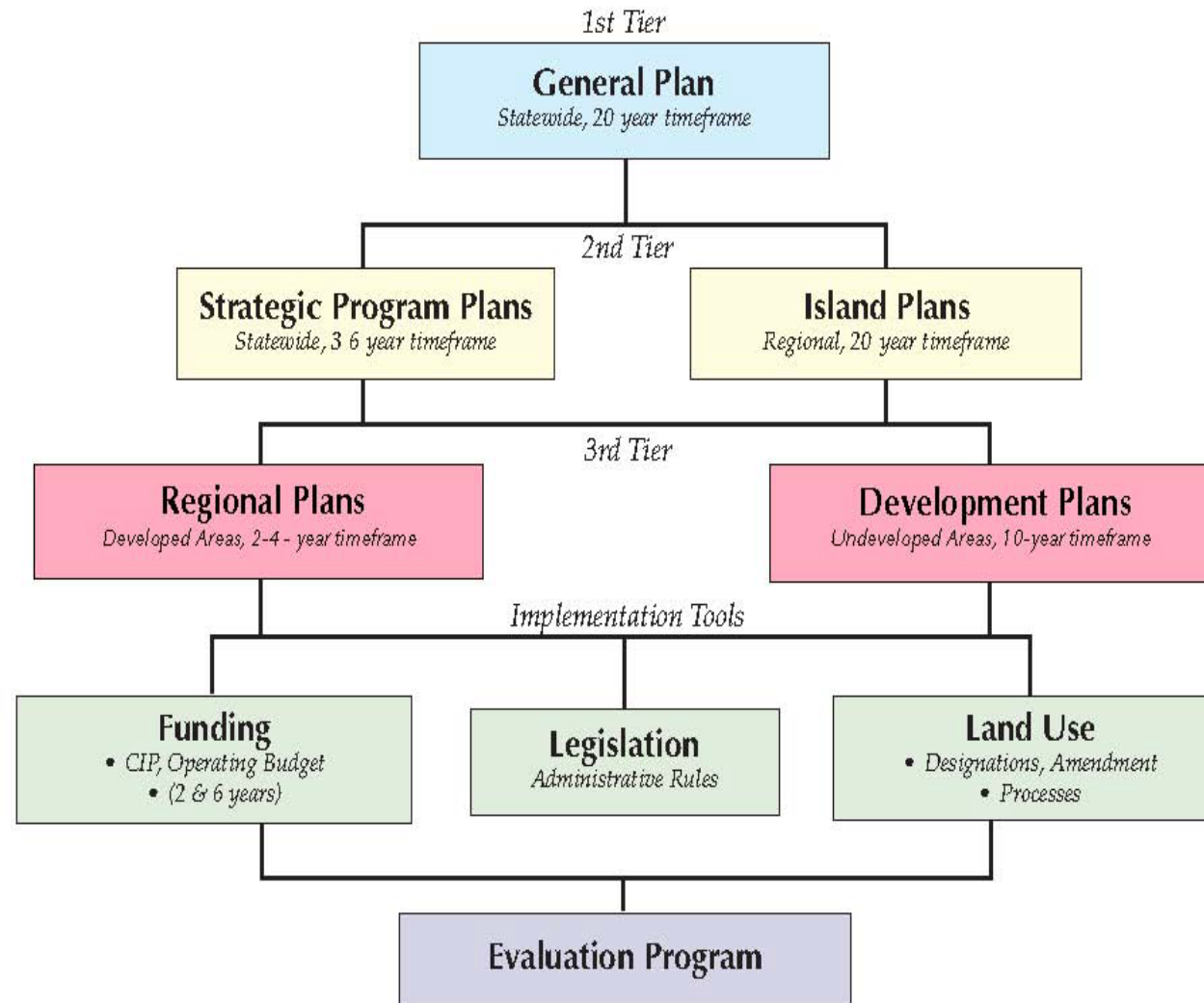
# Planning Office

## Planning Office

**STATUS UPDATE - PLAN IMPLEMENTATION  
IN THE KAPOLEI REGION, ISLAND OF O'AHU**



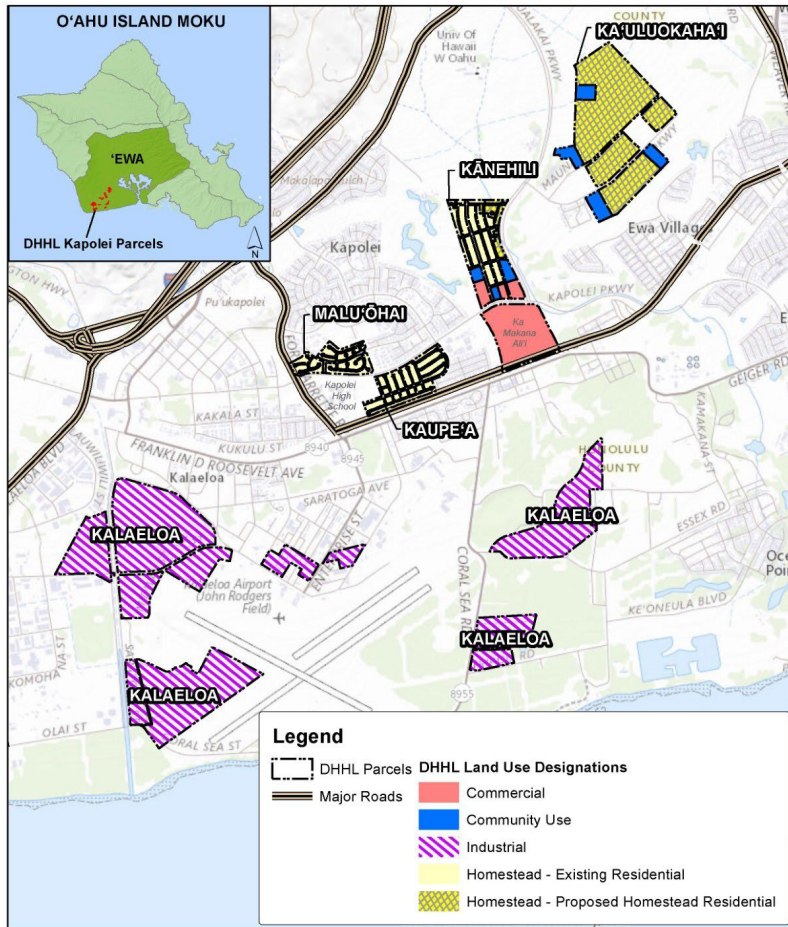
# DHHL Planning System



DHHL Planning System



# 2014 O'ahu Island Plan: Land Use Designation



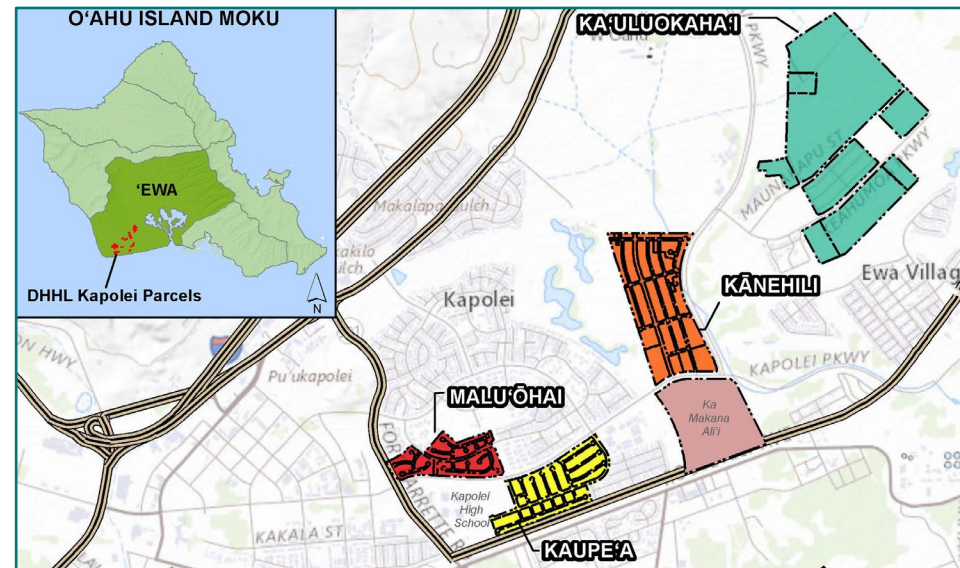
2014 O'ahu Island Plan Land Use Designation (LUD)	Kapolei, East Kapolei & Kalaeloa	Percent of LUD In Kapolei Region	Percent of LUD on O'ahu
Special District	0	0	-
Conservation	0	0	-
General Agriculture	0	0	-
Residential	345 acres	34%	21%
Pastoral	0	0	-
Subsistence Agriculture	0	0	-
Supplemental Agriculture	0	0	-
Industrial	550 acres	54%	81%
Community Use	35 acres	4%	11%
Commercial	80 acres	8%	84%
<b>TOTALS</b>	<b>1,010 acres</b>	<b>100%</b>	<b>15%</b>





# Kapolei Homesteads, O'ahu

- Malu'ōhai
- Kaupe'a
- Kānehili
- Ka'uluokaha'i





# 2010 Kapolei Regional Plan: Priority Projects

1. Support Heritage Center and Community Commercial Development
2. Support New School Development
3. Engage Beneficiaries in a Planning Charette Process
4. Develop Pedestrian/Bike Path Network to Community Resources
5. Preserve and Develop Parks to Service the Homestead Community





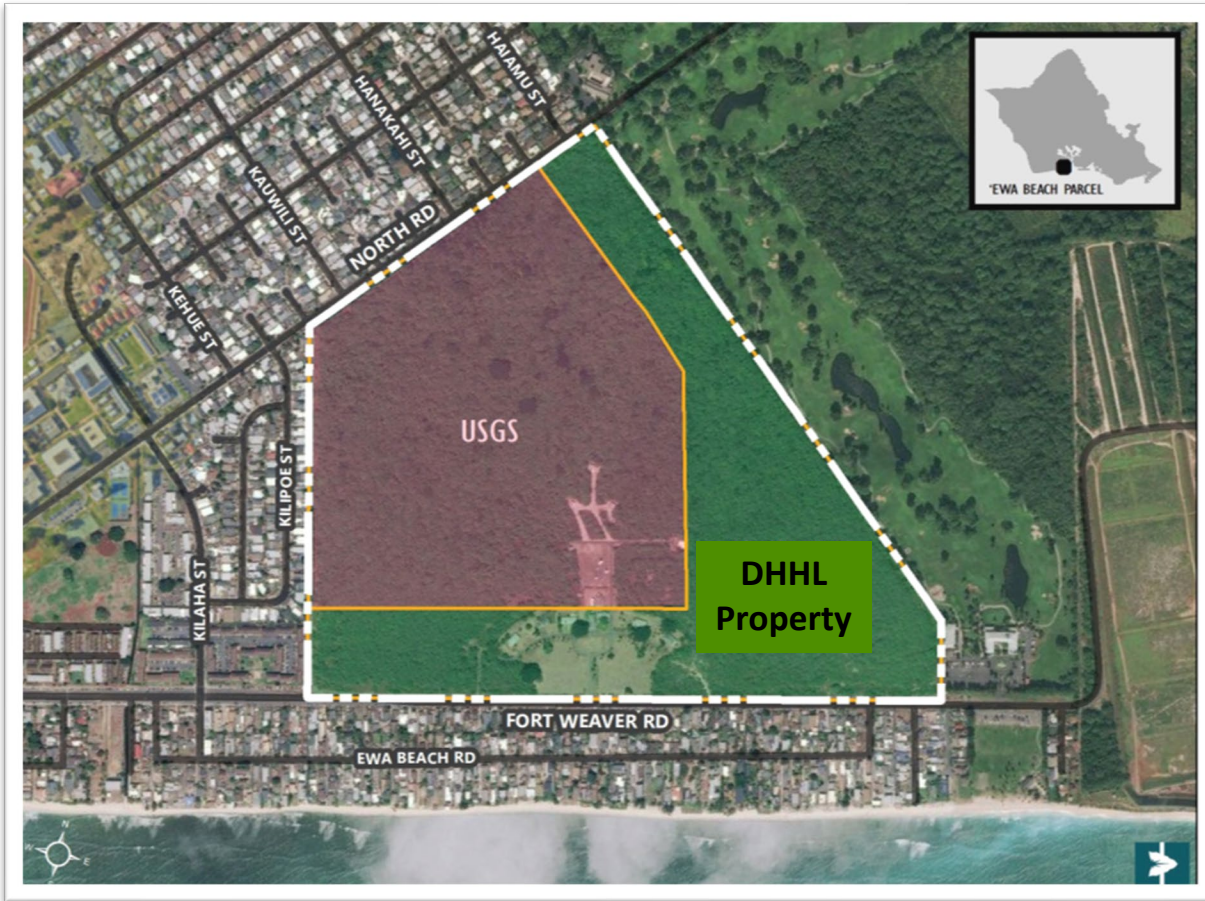
# 2022 Kapolei Regional Plan Update: Timeline

Date	Activity
October 2020	Regional leadership meeting and site visit
December 2020	Beneficiary Consultation #1
December 2020 – January 2022	Meetings with government agencies, landowners and community organizations
May 2021	Beneficiary Consultation #2 and online survey
November 2021	HHC Information Item presentation
December 2021	Beneficiary Consultation #3 and review of draft plan update
March 2022 (anticipated)	HHC Action Item for Kapolei Regional Plan Update adoption

[dhhl.hawaii.gov/po/oahu/kapolei-regional-plan-update-2020-2021/](https://dhhl.hawaii.gov/po/oahu/kapolei-regional-plan-update-2020-2021/)



# Additional Update: HHLRA/Property Conveyance



- Hawaiian Home Lands Recovery Act
- Former Pacific Tsunami Warning Center, 80-acre parcel
- DHHL due diligence conducted
- HHC authorization
- DHHL securing contract to plan and design the 'Ewa Beach Homestead Community Master Plan



# **Land Development Division**

## **East Kapolei**

### **Construction Project Updates**





# EAST KAPOLEI







# KANEHILI (EAST KAPOLEI I)

*Kānehili*

404 single-family houses

DHHL Offices

Community facilities

Fire Station

Commercial Parcels

Phase 9: 37 Turnkey Houses by Gentry Kapolei – all completed/occupied October 2020

Pedestrian Access – completed March 2021

November 2020





# KAULUOKAHAI (EAST KAPOLEI II)

**Ka'uluokaha'i**

Increment II-C

Increment II-E

Phase 2: 21 Vacant Lots  
In progress

Phase 3: 39 Turnkey Houses  
Scheduled completion February 2022

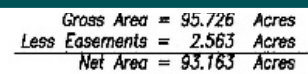
Phase 1: 100 Turnkey Houses  
Completed December 2019

Increment II-B

Increment II-A

Drafting Request for Proposals for transit-oriented development:  
multi-family rentals and retail.





130 Single-family Lots  
Advertise IFB: Q1 2022

Extend Maweke Street – open  
LDA3 for development

-ROADWAY LOT D-1  
ACCESS AND UTILITY EASEMENT II-C  
8.492 ACS.

ROADWAY LOT E-3 2.835 ACS.

Extend Maunakapu Street –  
connection to Ho’opili

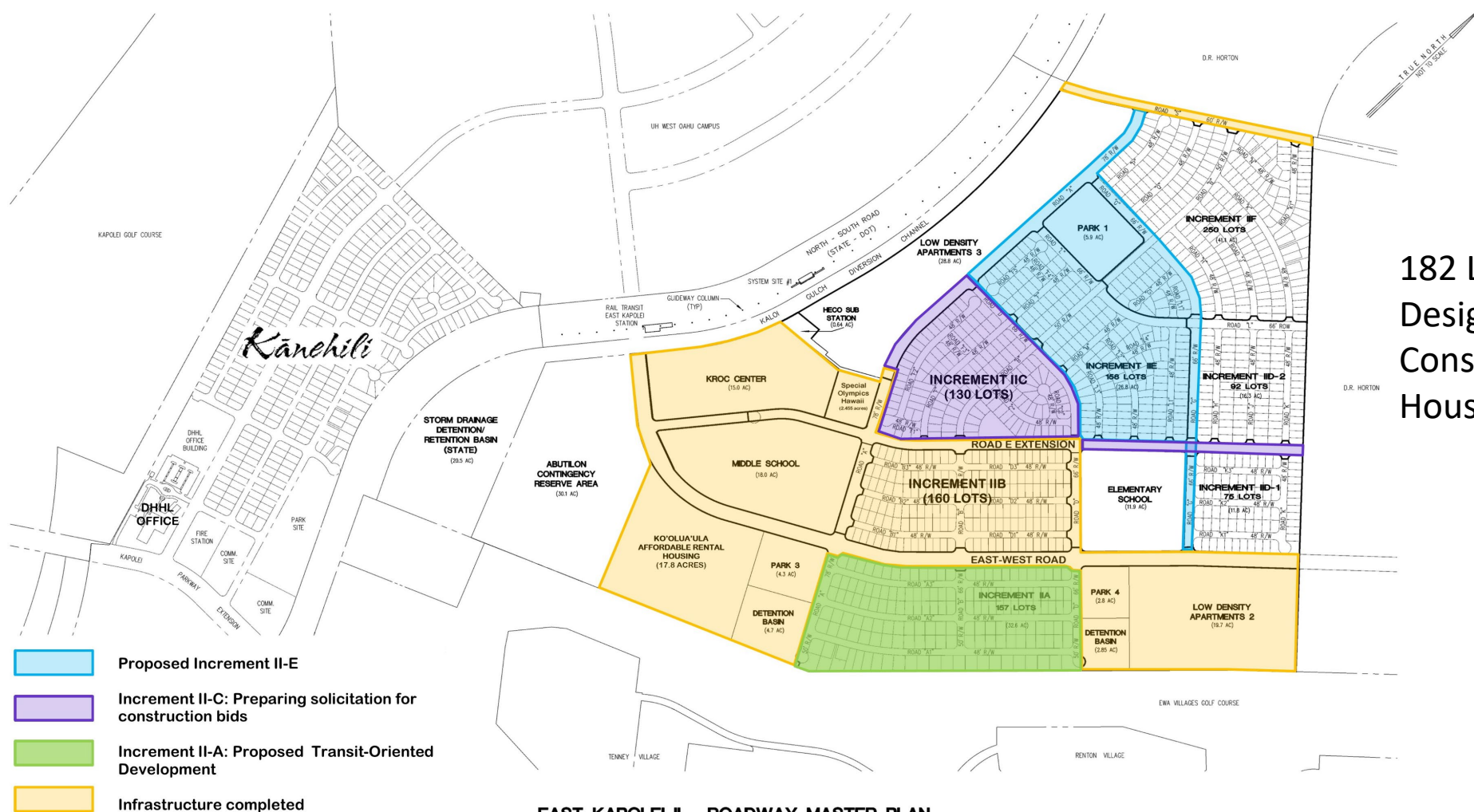
REMAINDER  
LOT 131  
12.861 ACS.  
11.867 ACS.

## Increment II-B





# KAULUOKAHAI INCREMENT II-E



## Increment II-E

182 Lots

Design: 2022-24

Construction: 2025-26

House Construction: 2027-28

### EAST KAPOLEI II - ROADWAY MASTER PLAN

HONOLULU, EWA, OAHU, HAWAII

PREPARED BY: COMMUNITY PLANNING AND ENGINEERING  
FOR: DEPARTMENT OF HAWAIIAN HOME LANDS

NOT TO SCALE

PRELIMINARY-SUBJECT TO CHANGE

SEPTEMBER 28, 2009  
AUGUST 27, 2009  
JUNE 22, 2008  
MAY 15, 2008



# Mahalo



DEPARTMENT OF HAWAIIAN HOME LANDS

[www.dhhl.hawaii.gov/po/oahu](http://www.dhhl.hawaii.gov/po/oahu)