



# HAWAIIAN HOME LANDS

HAWAIIAN HOMES COMMISSION  
DEPARTMENT OF HAWAIIAN HOME LANDS

**Meeting  
will begin  
at 6:30PM**

Please sign in using the  
Google Form link in the  
Zoom Chat Box

## **Kapolei Regional Plan Update**

VIRTUAL Beneficiary Consultation #3

THURSDAY, December 9, 2021 from 6:30 pm to 8:00 pm

# **WELINA, PULE, INTRODUCTIONS & SIGN-IN**



# Zoom Tips & Etiquette

- We will be recording the presentation.
- App or Internet callers:
  - Mute/Unmute – Toggle microphone icon, Alt+A
  - Questions: click on the “Chat” tab and type your question. Use the drop-down menu to send the message to the host “privately” or post for “everyone” to view.
- Telephone callers
  - Star (\*) 6 – Toggle mute/unmute
- Be kind, be respectful, and be courteous.
  - Allow others a chance to speak



# AGENDA

- **6:30PM:** Welina, Pule, and Housekeeping
- **6:35PM:** Project Team Self-Introductions
- **6:40PM:** SLIDESHOW – Draft Regional Plan Update
- **7:00PM:** Discussion – Questions and Comments
- **7:55PM:** Next Steps
- **8:00PM:** Closing

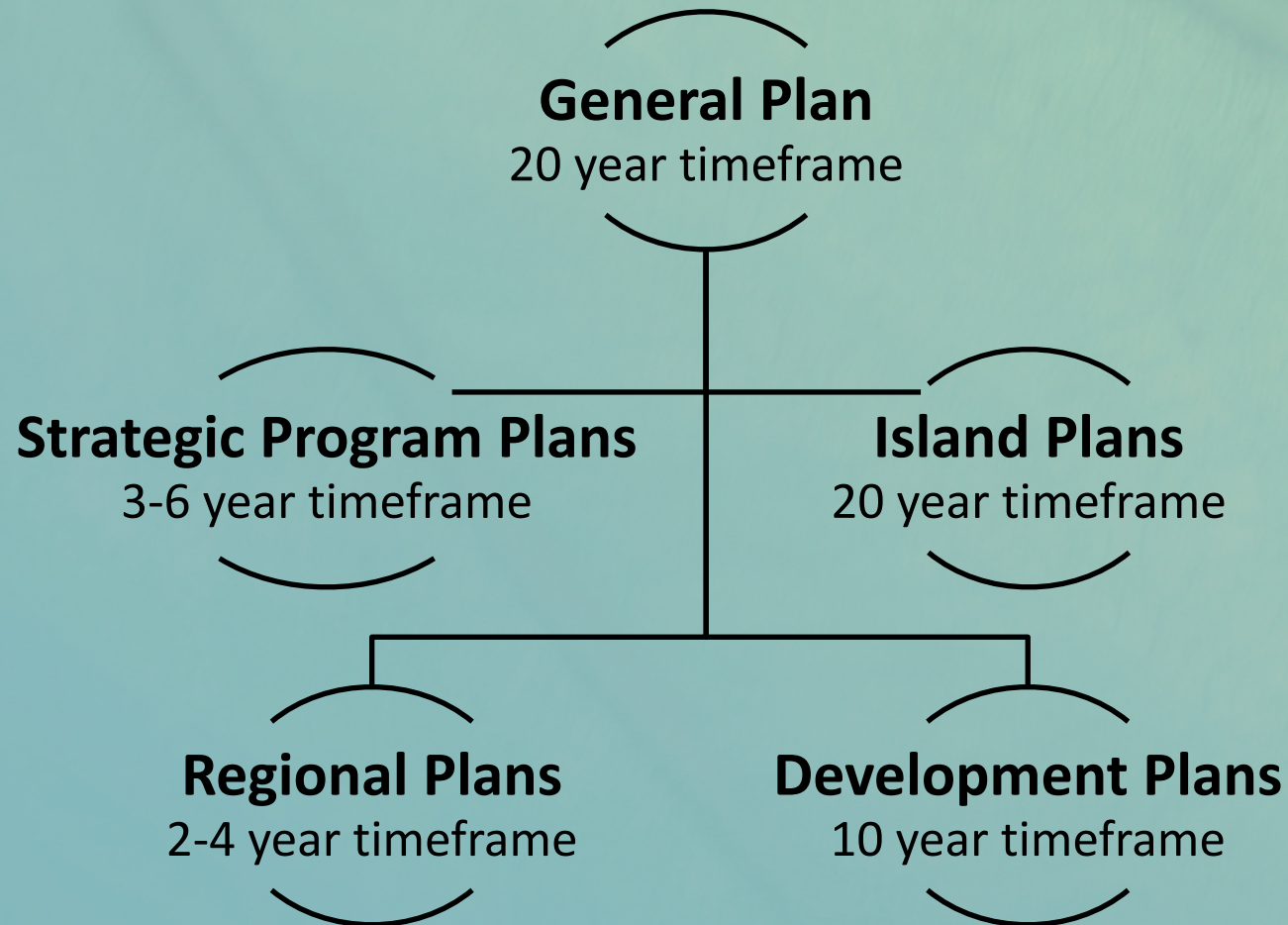


# **BENEFICIARY CONSULTATION #1 REVIEW**



# BC#1 REVIEW - What is a Regional Plan?

## DHHL Planning System



### Purpose of the regional plans :

- To enable the community to be involved in planning for their region.
- To assist the community with identifying and prioritizing projects within the region.
- To identify detailed action steps needed to implement the priority projects.



# KAPOLEI



- Homestead Regional Profile
- Regional Lands & Development
- Infrastructure
- Homestead Concerns & Priorities

## REGIONAL PLAN

November 2010

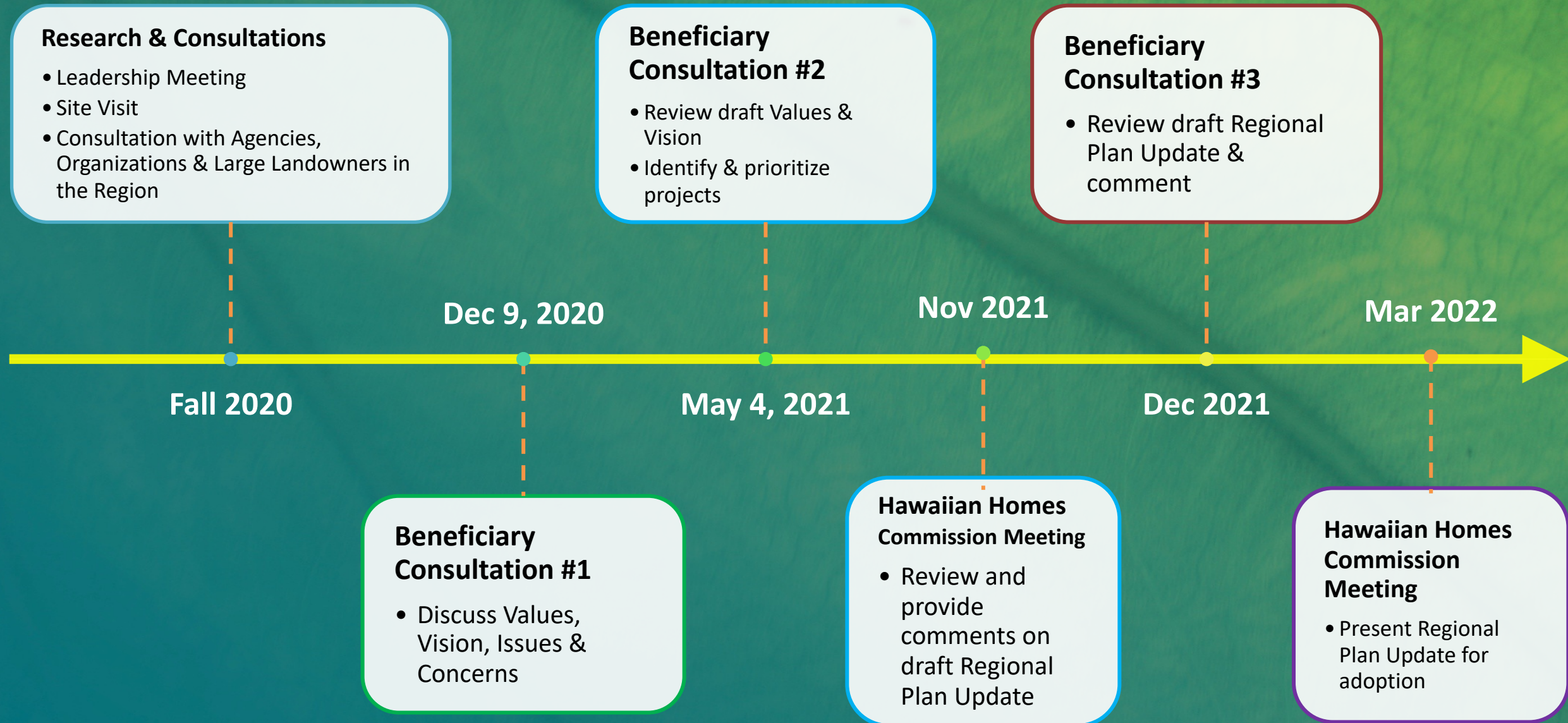
### THIS UPDATE WILL ALSO INCLUDE:

1. Vision Statement and Community Values for the Region.
2. Implementation Action Steps for each Priority Project.





# Projected Timeline & Process





# Values, Vision, Breakout Room Recap (BC#1)

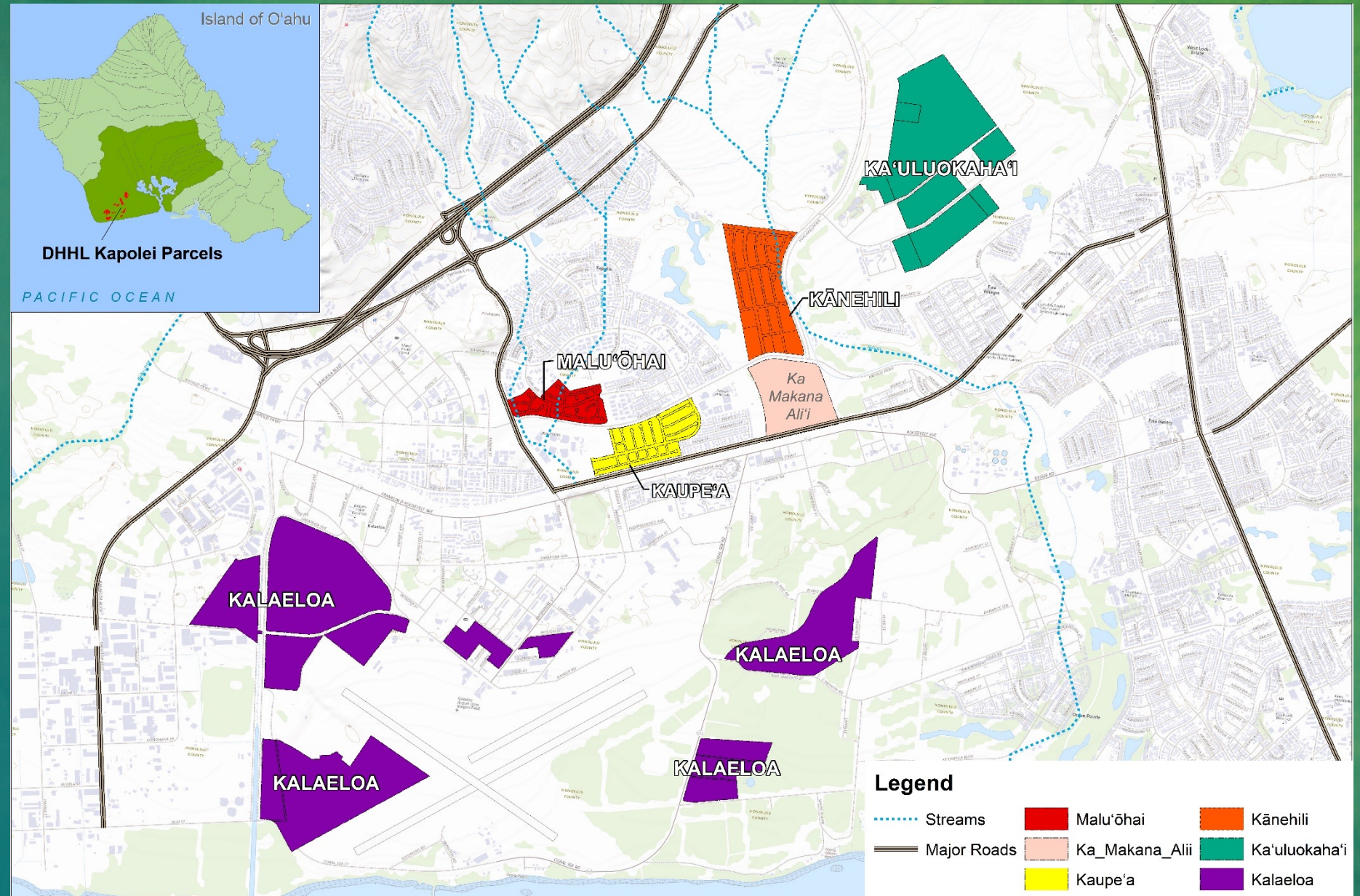
- Three breakout rooms
- Vision Exercise
  - Asked questions & encouraged discussion about the homesteads and region today and in the future
  - Used to identify community values, a vision statement, and potential project ideas



# **REGIONAL PROFILE REVIEW**



# Regional Profile





# VISION STATEMENT

*From the Pu‘u in the uplands to the shores of Kualaka‘i, Kapolei is a growing region that looks to its history, mo‘olelo, ‘āina and kūpuna to build a strong foundation for our Hawaiian homestead communities. Kānaka embrace the area’s rugged climate and terrain, which motivates them to be resilient and self-sufficient. The wahi pana and kīpuka of this place are celebrated and stewarded for future generations.*



# GUIDING PRINCIPLES

## **Natural, Cultural and Agricultural Resources**

Preserve Kapolei's rich natural, cultural, and agricultural history within new land uses and programs. Kapolei is a Town that has grown in what was once Country. That Country-feel should be incorporated wherever appropriate.

## **Wahi Pana**

Traditional place names and wahi pana are of great value. Mo'olelo and histories are shared with homesteaders and the extended community of Kapolei to ensure that these celebrated places are respected, protected, and remembered into the future. Wahi pana, of old and new, throughout the region will be used by the community to gather and practice the native culture



# GUIDING PRINCIPLES

## **Kūpuna**

Traditionally, kūpuna held an important role and place in native Hawaiian society. Spaces and resources in Kapolei will be used to create full and healthy lives for kūpuna as they age in place.

## **Keiki**

Resources for ‘ōpio and keiki in Kapolei are a priority. There will be safe places for youth to spend their time and programs for them to learn and play near their homes.



# GUIDING PRINCIPLES

## **Self-Sufficiency**

Kapolei is a place where people can live, work and play. All the things that homesteaders need to have a healthy, thriving community can be found within the region. Kapolei offers an affordable lifestyle where people have time to enjoy their homes and their 'ohana.



# **BENEFICIARY CONSULTATION #2 REVIEW**



# Issues & Opportunities (BC#2)

- Kapolei Heritage Center
- Open spaces, garden spaces, & recreation spaces
- Homestead opportunities for kūpuna to age in place
- Programming for youth, young adults and kūpuna
- Programs for cultural and historical education
- Promote cultural celebrations and gatherings in common spaces
- Economic development for homesteaders
- Hawaiian schools for keiki
- Make a place of worship and a place a rest for homesteaders
- Address post-build issues in the homesteads



# FINAL PROJECT IDEAS LIST

- Support Heritage Center and Community Commercial Development
- Support the Development of a Hawaiian Focus/Immersion School
- Create More Open Spaces, Park Spaces, and Recreation Spaces to Support the Homestead Community
- Create a Kūpuna Living Community
- Establish a Place of Worship and a Place of Rest/Cemetery for the Homestead Community
- Create a Community Garden/Agricultural Space/Farmer's Market for Homesteaders
- Create Multi-Family and Rental Housing Developments for Homesteaders in Kapolei
- Hawaiian Culture Center
- Create Entrepreneurial and Business Opportunities
- Support Music
- Nurture Kapolei-Based Community Health Workers and Build Partnerships and Community Capacity to Help Address the Findings of Recently Completed Kapolei Homestead Health Survey
- DHHL to Address Post-build Issues in the Homesteads
- DHHL to Provide More Options for Communication in the Homesteads instead of only Sandwich Isles Communication
- Establish and Grow Inclusive Housing Programming for native Hawaiians with disabilities



# Priority Project Poll Results

- Online poll
- Open for voting from May 5 to May 19, 2021
- 60 participants
- 14 project ideas

Project Idea	Votes
Create more open spaces...	32
Kupuna Living Community	32
Support Heritage Center	31
Support Hawaiian Lang./focused School development	30
Telecommunications	30



# **PRIORITY PROJECT REVIEW**



# PRIORITY PROJECT #1\*

**Create More Open Spaces, Park Spaces, and Recreation Spaces to support the Homestead Community.**

Action Steps	Required Resources
<ol style="list-style-type: none"><li>1. Establish a parks committee.</li><li>2. Survey the community.</li><li>3. Develop planned park space.</li><li>4. Identify potential locations outside of planned parks.</li><li>5. Land Use Designation Amendment for DHHL lands.</li><li>6. Develop park space on non-DHHL lands.</li></ol>	<ul style="list-style-type: none"><li>• Technical Assistance</li><li>• Master/Special Area Plan &amp; HRS Chapter 343 Compliance</li><li>• Issuance of Finding of No Significant Impact (FONSI)</li><li>• Long-term disposition</li><li>• Funding (Planning, Design &amp; Construction)</li><li>• HHC Approval</li></ul>



# PRIORITY PROJECT #2\*

## Create a Kūpuna Living Community.

Action Steps	Required Resources
<ol style="list-style-type: none"><li>1. A project champion is identified.</li><li>2. Outreach with kūpuna.</li><li>3. Develop criteria for a kūpuna living community in Kapolei.</li><li>4. Identify potential locations.</li><li>5. Land Use Designation Amendment for DHHL lands.</li><li>6. Acquire lands outside of the DHHL land inventory.</li></ol>	<ul style="list-style-type: none"><li>• Technical Assistance</li><li>• Due diligence studies</li><li>• Master/Special Area Plan &amp; HRS Chapter 343 Compliance</li><li>• Issuance of Finding of No Significant Impact (FONSI)</li><li>• Funding (Planning, Design &amp; Construction)</li><li>• HHC Approval</li></ul>



# PRIORITY PROJECT #3

## Support the Heritage Center and Community Commercial Development

Action Steps	Required Resources
<ol style="list-style-type: none"><li>1. Permitting and construction for Ho'omaka Marketplace.</li><li>2. Open Ho'omaka Marketplace.</li><li>3. Funding.</li><li>4. Permitting and other entitlements for the Kapolei Heritage Center.</li><li>5. Site preparation and construction.</li><li>6. Operations and maintenance.</li><li>7. Monitoring and reporting.</li></ol>	<ul style="list-style-type: none"><li>• Technical Assistance</li><li>• Funding (Planning, Design &amp; Construction)</li></ul>



# PRIORITY PROJECT #4\*

## Support the Development of a Hawaiian-Focus School/Hawaiian Immersion School

Action Steps	Required Resources
<ol style="list-style-type: none"><li>1. Form a committee.</li><li>2. Identify potential partnerships.</li><li>3. Develop criteria.</li><li>4. Identify potential locations.</li><li>5. Locate at the Kapolei Heritage Center.</li><li>6. Select a site outside of the DHHL land inventory.</li></ol>	<ul style="list-style-type: none"><li>• Technical Assistance</li><li>• Funding (Planning, Design &amp; Construction)</li></ul>



# PRIORITY PROJECT #5\*

## Provide More Options for Telecommunications Service to Homesteads

Action Steps	Required Resources
<p><u>For Commerical Lessees:</u></p> <ol style="list-style-type: none"><li>1. Abide by the terms of the lease agreement, including limitations to telecommunications providers until a resolution to the constraints of the <i>perpetual license agreement with exclusivity jurisdiction</i> is implemented.</li></ol> <p><u>For Homestead Lessees:</u></p> <ol style="list-style-type: none"><li>1. Beneficiaries can start to keep a diary and/or documentation of service issues, requests and outcomes to illustrate their communication needs and challenges and share such information with regulatory authorities like the Public Utilities Commission or Federal Communications Commission that may have jurisdiction over telecommunication or broadband services and providers like Sandwich Isles Communications.</li></ol>	<ul style="list-style-type: none"><li>• Assistance and Coordination as needed</li><li>• HHC Approval</li></ul>



# **KŪKĀKŪKĀ/ OPEN DISCUSSION**



# Next Steps

- Link to provide comments will be OPEN until **MONDAY, JANUARY 10, 2022 at 8:00PM** – four+ weeks
- Draft Regional Plan PDF is available at:  
<https://dhhl.hawaii.gov/po/oahu/kapolei-regional-plan-update-2020-2021/>
- Draft Regional Plan hard copy is available for review at:  
**DHHL's Kapolei Office**  
91-5420 Kapolei Parkway, Kapolei, Hawaii 96707  
Appointments are required. Please call (808) 620-9500.



# Mahalo

For more information contact:

**Lillie Makaila, Planner**  
[lillie@townscapeinc.com](mailto:lillie@townscapeinc.com)  
(808) 550-3893



**Pearlyn Fukuba, Planner**  
[dhhl.planning@hawaii.gov](mailto:dhhl.planning@hawaii.gov)  
(808) 620-9279



Or visit the project website at:

<https://dhhl.hawaii.gov/po/oahu/kapolei-regional-plan-update-2020-2021/>