

ESAKI
URVEYING AND
APPING, INC.

1610 Halekuna Street
Lihue, Kauai, Hawaii 96766
Ph. (808) 246-0625 Fax (808) 246-0229

• CIVIL ENGINEERS • SURVEYORS • PLANNERS

REVISION	DATE	DESCRIPTION	BY	APPROVED
6-28-12		DEPARTMENT OF WATER REVISIONS		
6-20-12		PLAN & PROFILE REVISIONS	WW	

REVISIONS

WAYNE T. WADA
LICENSED PROFESSIONAL ENGINEER
No. 5281-C
HAWAII, USA

THIS WORK WAS PREPARED
BY ME OR UNDER MY SUPERVISION

Wayne T. Wada
EXPIRES: APRIL 30, 2014

P'ILANI MAI KE KAI SUBDIVISION
PHASE II

Anahola, Kauai, Hawaii

Tax Map Key: (4) 4-8-16: 03
(4) 4-8-22: 89

Developer/Owner:
Department of Hawaiian Home Lands
91-5420 Kapolei Parkway
Kapolei, HI 96707

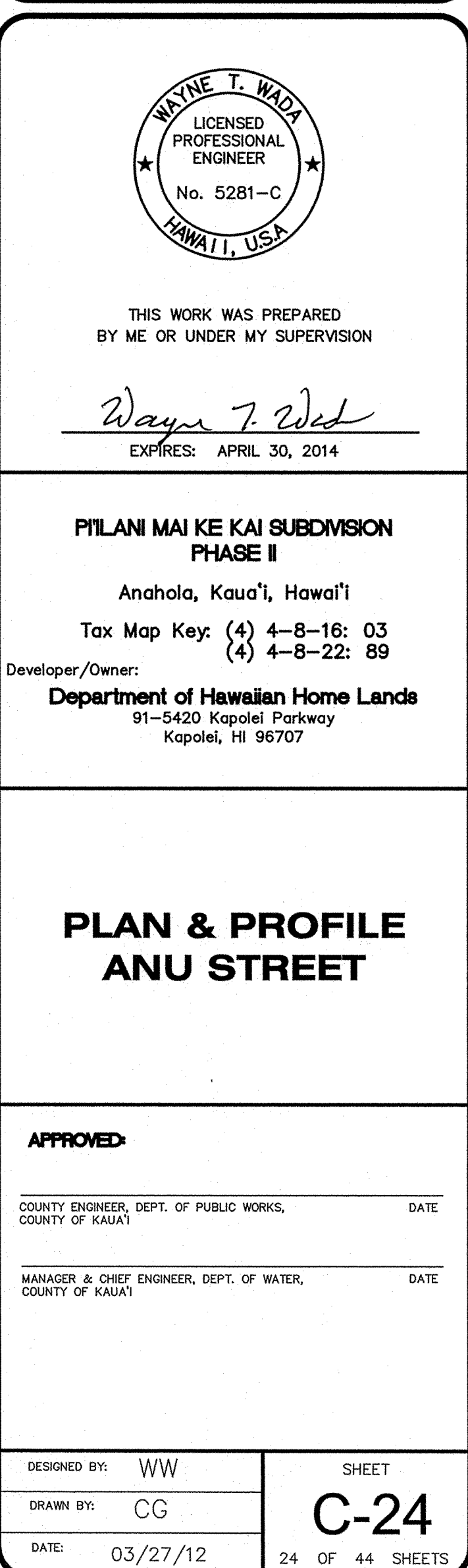
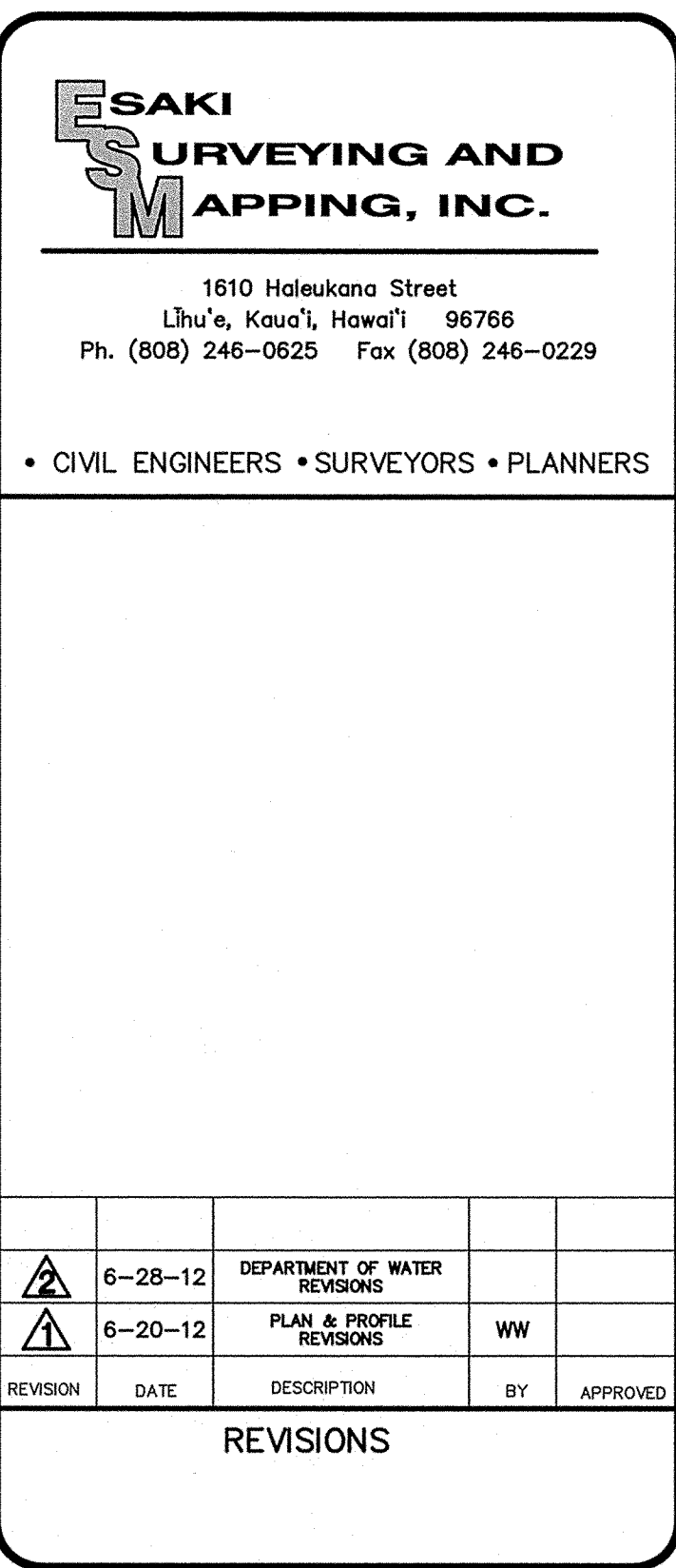
PLAN & PROFILE
ANU STREET

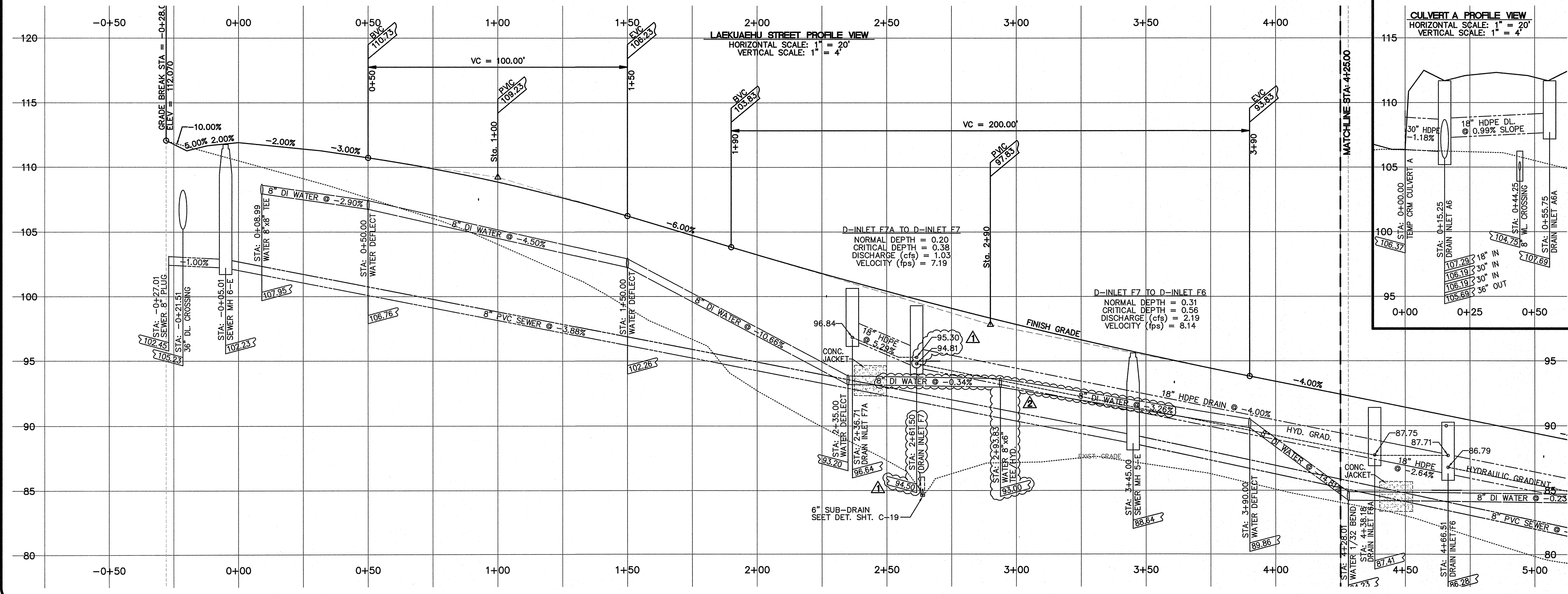
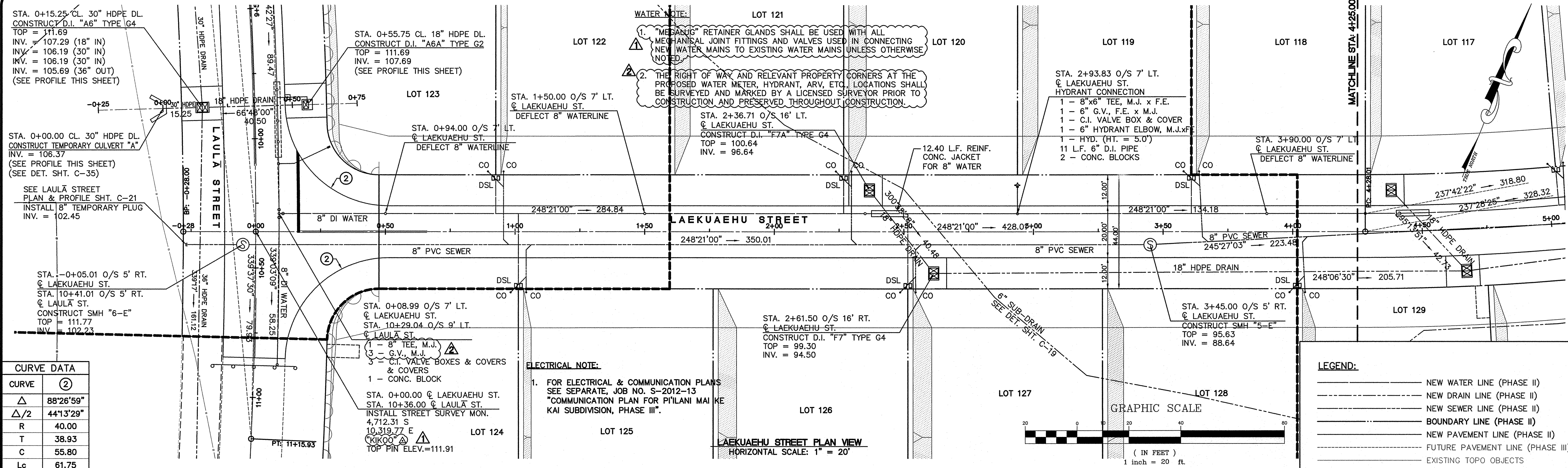
APPROVED:

COUNTY ENGINEER, DEPT. OF PUBLIC WORKS, COUNTY OF KAUAI DATE

MANAGER & CHIEF ENGINEER, DEPT. OF WATER, COUNTY OF KAUAI DATE

DESIGNED BY:	WW	SHEET
DRAWN BY:	CG	C-23
DATE:	03/27/12	23 OF 44 SHEETS





ESAKI SURVEYING AND MAPPING, INC.

1610 Halekuna Street
Lihue, Kauai, Hawaii 96766
Ph. (808) 246-0625 Fax (808) 246-0229

CIVIL ENGINEERS • SURVEYORS • PLANNERS

REVISION	DATE	DESCRIPTION	BY	APPROVED
6-28-12		DEPARTMENT OF WATER REVISIONS	WW	
6-20-12		PLAN & PROFILE REVISIONS	WW	

WAYNE T. WADA
LICENSED PROFESSIONAL ENGINEER
No. 5281-C
HAWAII, USA

THIS WORK WAS PREPARED BY ME OR UNDER MY SUPERVISION

Wayne T. Wada
EXPIRES: APRIL 30, 2014

PILANI MAI KE KAI SUBDIVISION PHASE II

Anahola, Kauai, Hawaii

Tax Map Key: (4) 4-8-16: 03
(4) 4-8-22: 89

Developer/Owner:
Department of Hawaiian Home Lands
91-5420 Kapolei Parkway
Kapolei, HI 96707

APPROVED:

COUNTY ENGINEER, DEPT. OF PUBLIC WORKS, COUNTY OF KAUAI

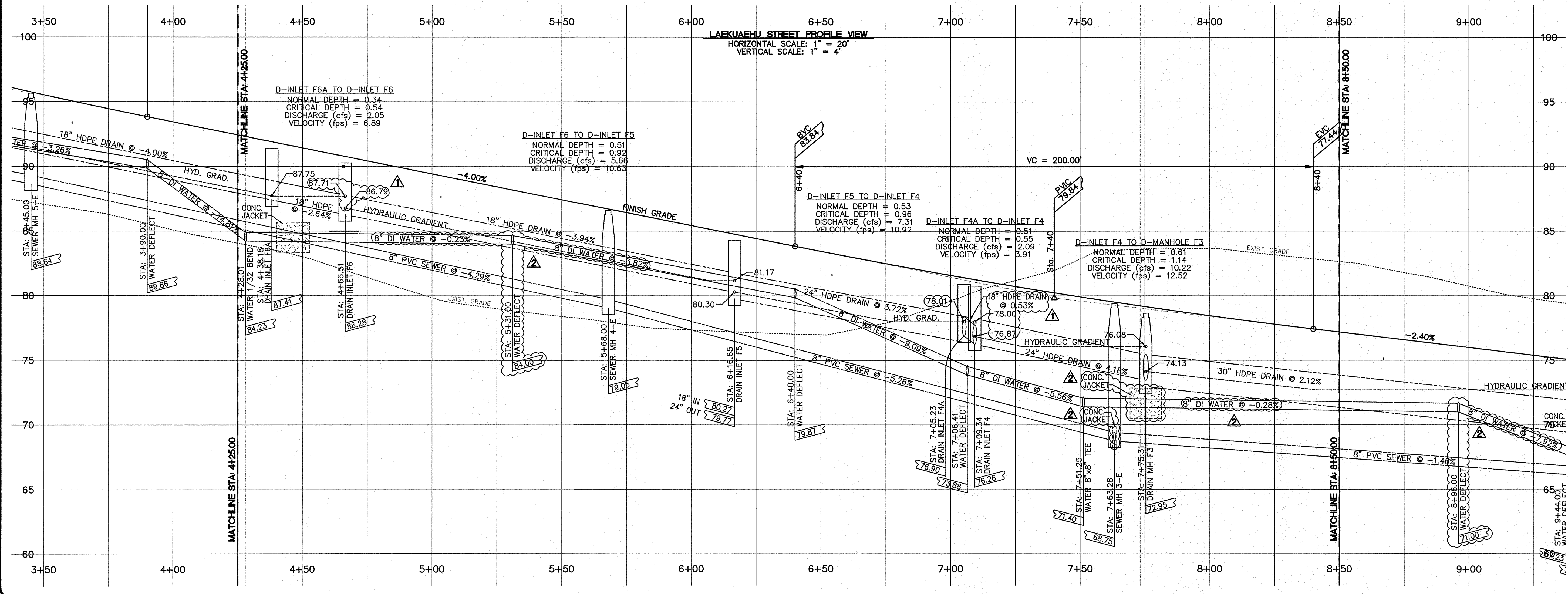
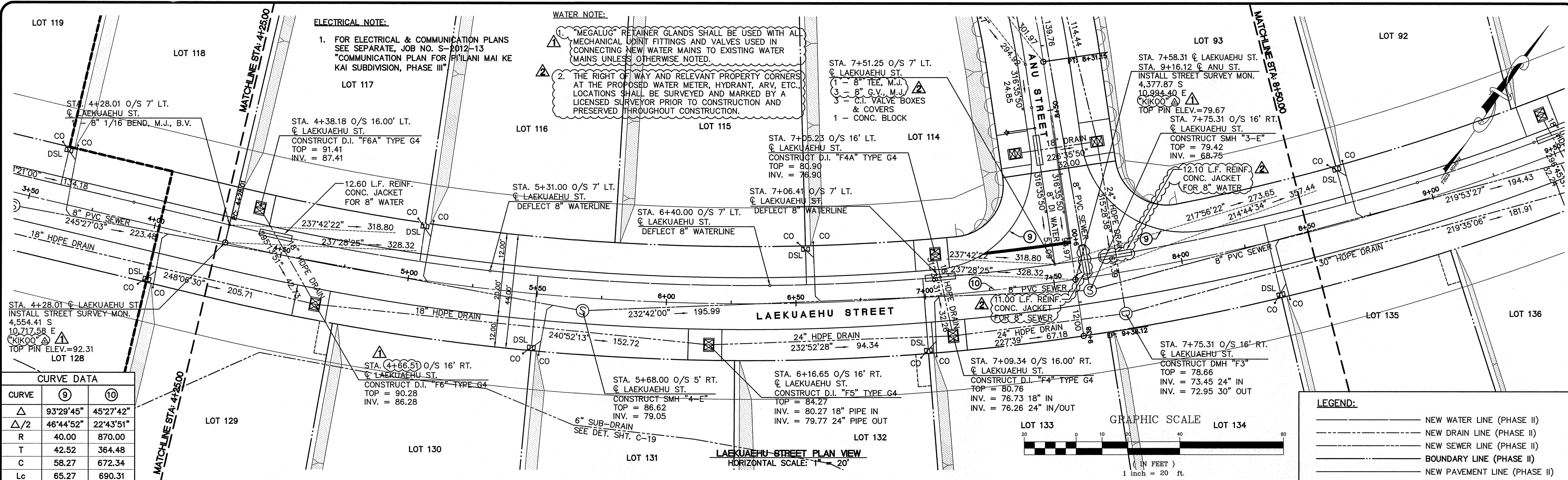
MANAGER & CHIEF ENGINEER, DEPT. OF WATER, COUNTY OF KAUAI

DESIGNED BY: WW

DRAWN BY: CG

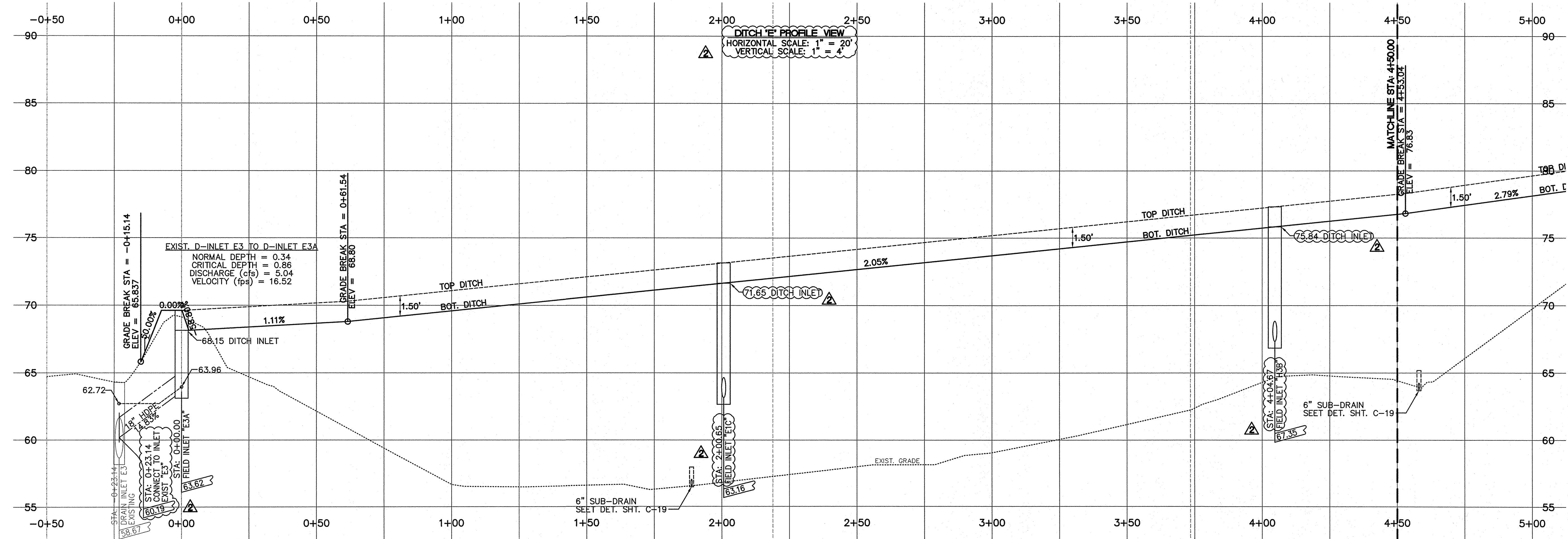
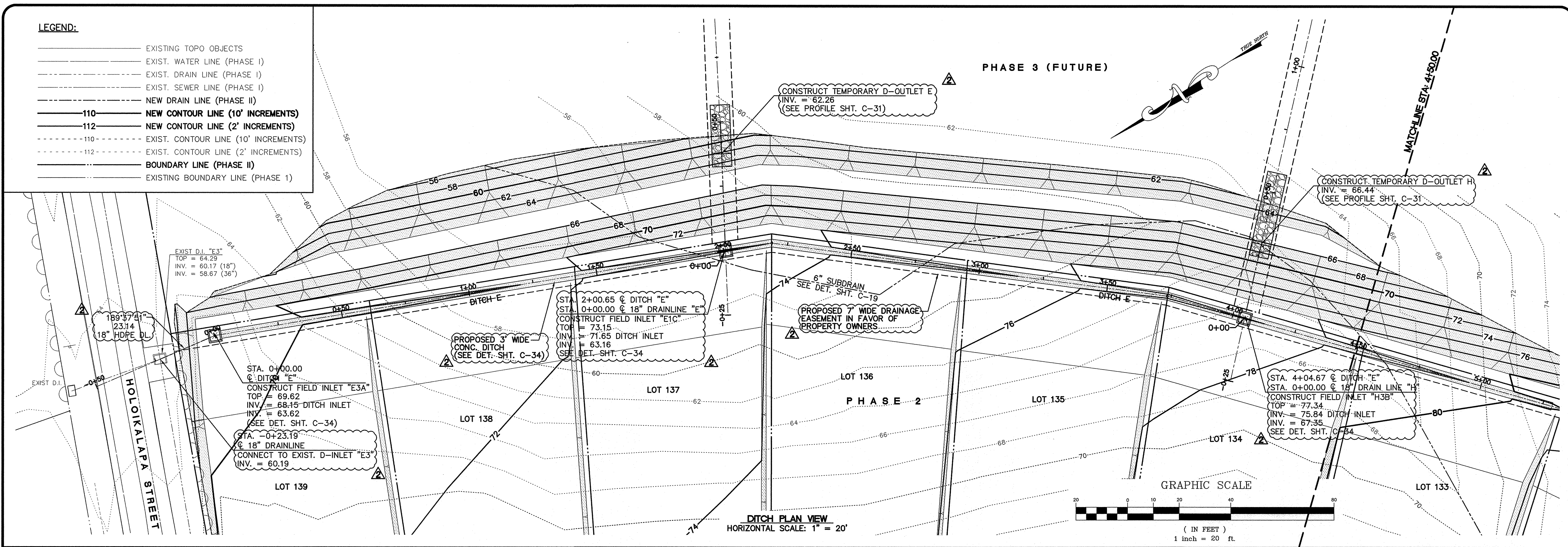
DATE: 03/27/12

SHEET
C-25
25 OF 44 SHEETS



LEGEND:

- EXISTING TOPO OBJECTS
- EXIST. WATER LINE (PHASE I)
- EXIST. DRAIN LINE (PHASE I)
- EXIST. SEWER LINE (PHASE I)
- NEW DRAIN LINE (PHASE II)
- 110 — NEW CONTOUR LINE (10' INCREMENTS)
- 112 — NEW CONTOUR LINE (2' INCREMENTS)
- 110 — EXIST. CONTOUR LINE (10' INCREMENTS)
- 112 — EXIST. CONTOUR LINE (2' INCREMENTS)
- BOUNDARY LINE (PHASE II)
- EXISTING BOUNDARY LINE (PHASE I)



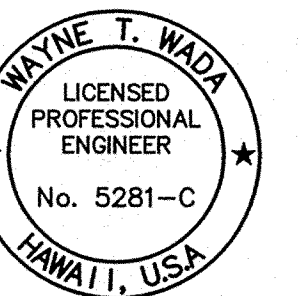
ESAKI
SURVEYING AND
MAPPING, INC.

1610 Halekuna Street
Lihue, Kauai, Hawaii 96766
Ph. (808) 246-0625 Fax (808) 246-0229

• CIVIL ENGINEERS • SURVEYORS • PLANNERS

REVISION	DATE	DESCRIPTION	BY	APPROVED
6-28-12		CONCRETE SWALE LOCATION REVISION INLET "E3A" REVISION INLET "E1C" REVISION D-OUTLET "E" REVISION INLET "H3B" REVISION D-OUTLET "H" REVISION DRAINAGE EASEMENT REVISION	WW	

REVISIONS



THIS WORK WAS PREPARED
BY ME OR UNDER MY SUPERVISION

Wayne T. Wada
EXPIRES: APRIL 30, 2014

PILANI MAI KE KAI SUBDIVISION
PHASE II

Anahola, Kauai, Hawaii

Tax Map Key: (4) 4-8-16: 03
(4) 4-8-22: 89

Developer/Owner:
Department of Hawaiian Home Lands
91-5420 Kopelei Parkway
Kapelei, HI 96707

DRAINAGE
AND DITCH
PLAN AND PROFILE

APPROVED:

COUNTY ENGINEER, DEPT. OF PUBLIC WORKS,
COUNTY OF KAUAI DATE
N.A.
MANAGER & CHIEF ENGINEER, DEPT. OF WATER,
COUNTY OF KAUAI DATE

DESIGNED BY: WW SHEET
DRAWN BY: CG C-30
DATE: 03/27/12 30 OF 44 SHEETS

